



Manifold Check Valves • 500 psi [34.5 bar]

designed for use with

3M™ Novec™ 1230 Fire Protection Fluid

Description

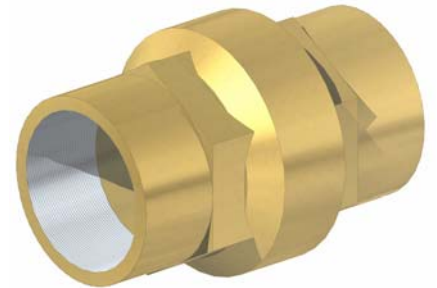
The Manifold Check Valve is required when a manifold is used to enable two or more agent storage cylinders to share one common discharge piping configuration. Their purpose is to prevent loss of agent in the event that any of the agent storage cylinders are not connected to the manifold at time of system discharge.

Manifold Check valves are constructed of a brass body and a rubber internal sealing mechanism. The check is spring assisted to ensure the valve closes before flow reversal. This feature helps prevent the phenomenon known as “hammer” and its associated damage to the piping systems.

The Manifold Check Valve features a wrench-flat on the outer surface for tightening. Check Valves may be installed in the vertical or horizontal position.



UL LISTED



Part Number	Description	Valve Size
FTF 701001	Check Valve	1" [25mm]
FTF 701501	Check Valve	1 ½" [40mm]
FTF 702501	Check Valve	2 ½" [65mm]
FTF 703001	Check Valve	3" [80mm]
FTF 704001	Check Valve	4" [100mm]